

VEPTR CANNOT BE USED IN PATIENTS WITH KYPHOSIS

Mr MHH Noordeen FRCS

Great Ormond Street Hospital for Children
The Royal National Orthopaedic Hospital
London, UK



VEPTR

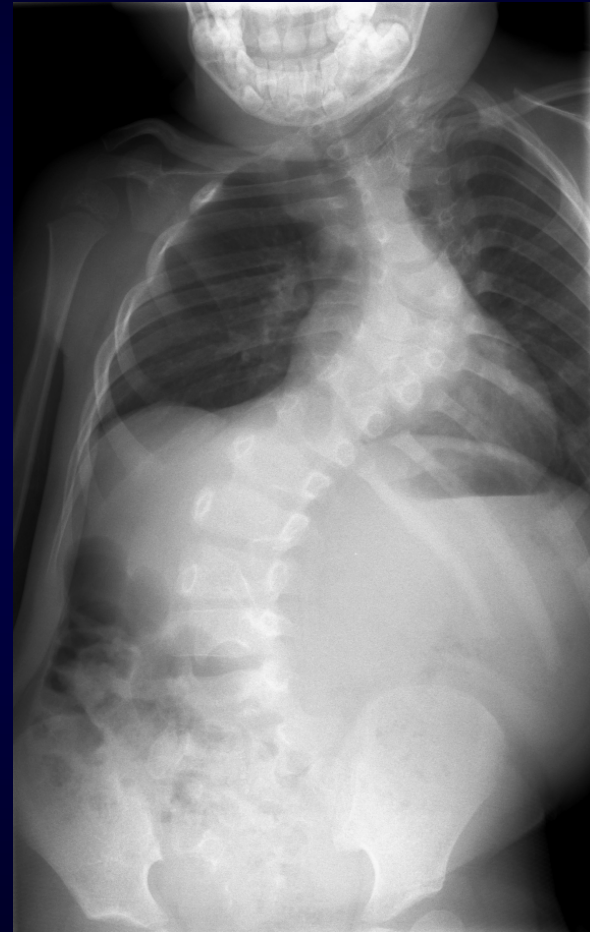
Vertical Expandable
Titanium Prosthetic Rib



VEPTR – The Facts

Used to treat and prevent
Thoracic Insufficiency
Syndrome due to Rib Cage
Deformity

It is a RIB (Rib Cage, Chest)
Device not a Spine
(Vertebral Column) Device.



VEPTR – The Facts

It only spans the dorsal spine having even having a weak attachment on the most distal Ribs (Ribs 11 and 12 are usually flimsy).

It cannot be extended through the chest to fix the cervical or lumbar spine.

Proximal failures and migrations has sometimes disastrous complications (Brachial Plexus Injuries)

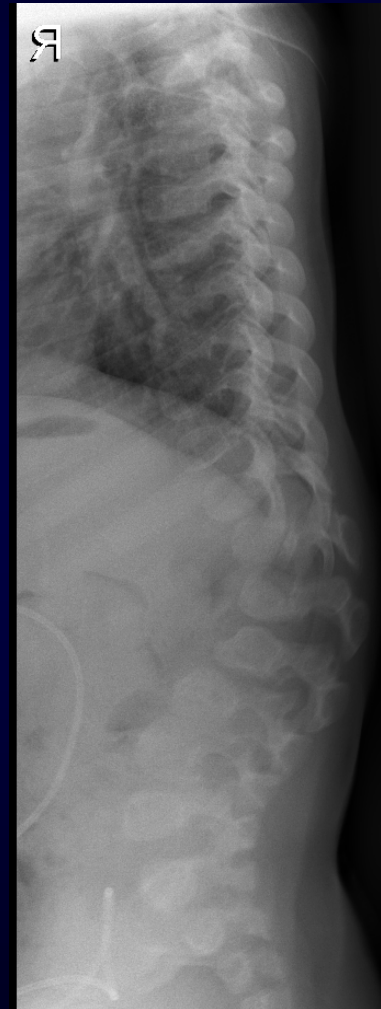


KYPHOSIS – The Facts

Kyphosis is mainly a Vertebral Column Deformity not a Rib Cage Problem.

Kyphosis can occur in the cervico-dorsal, dorso-lumbar and lumbar spine in areas anatomically having no ribs.

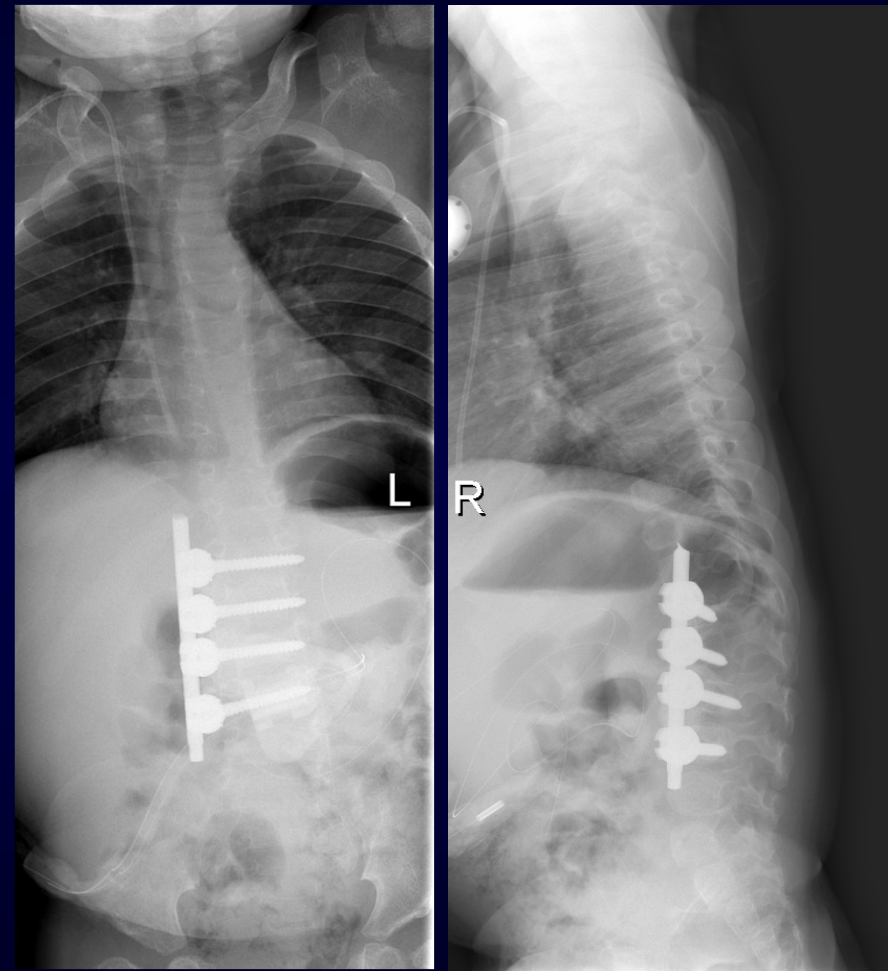
In Kyphosis there is an increase in the Anterior-Posterior Diameter of the Chest hence the Space Available for Lungs increases in AP (not decreased).



KYPHOSIS – The Facts

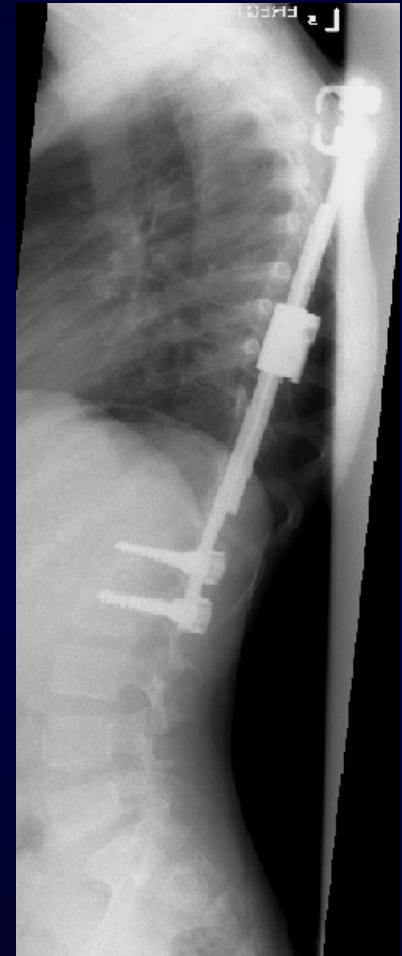
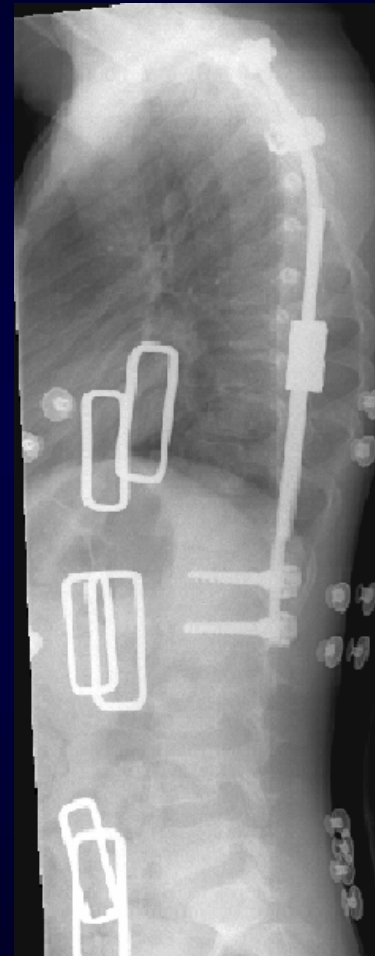
Attachment to the vertebrae (pedicle / anterior screws...) are more stable than the ribs to fix and correct the spine. Direct versus Indirect fixation and correction.

Pedicle / anterior screws engage the vertebral body itself instead of the VEPTR which attaches in an adjacent bone.



KYPHOSIS – The Facts

Proximal hooks in growing rods (claw or double claw) failures has no reported neurological complications.



CONCLUSIONS

- Correction of kyphosis is demanding with all types of growing implants.
- Many of the failures of Growing Implants are due to proximal construct failures, migrations.... which are more common in kyphosis.
- Kyphosis needs to be flexible before correcting it with any growing implants.
- If needed growing rods can be tried in selected cases however No Place for VEPTR

