

# Juvenile Idiopathic Scoliosis: Brace Treatment to Skeletal Maturity



Amanda Whitaker, MD

Nationwide Children's Hospital, Columbus, OH USA

Timothy Hresko, Alexandra Grzywna, Patricia Miller, Lawrence Karlin, Daniel Hedequist, John Emans, Michael Glotzbecker  
Boston Children's Hospital, Boston, MA USA



**Boston Children's Hospital**  
Orthopedic Center



**NATIONWIDE CHILDREN'S**  
*When your child needs a hospital, everything matters.™*



**HARVARD MEDICAL SCHOOL**  
TEACHING HOSPITAL

# Disclosures

- Research Funding:
  - Ellipse technologies
- Immediate family member employment
  - Lumenis, Inc



Boston Children's Hospital  
Orthopedic Center



NATIONWIDE CHILDREN'S  
*When your child needs a hospital, everything matters.™*



HARVARD MEDICAL SCHOOL  
TEACHING HOSPITAL

# Background

Juvenile Idiopathic Scoliosis (JIS): onset between 4-10 years

Surgical correction rate high (49-87%)<sup>1-7</sup>

Intraspinal pathology rate high (12-32%)<sup>8-10</sup>

Mixed methodology and results with bracing<sup>1,2,7</sup>



Boston Children's Hospital  
Orthopedic Center



NATIONWIDE CHILDREN'S  
*When your child needs a hospital, everything matters.™*



HARVARD MEDICAL SCHOOL  
TEACHING HOSPITAL

# Methods

Retrospective review 375 patients (4-10 yrs) braced for scoliosis from 2002-12.

- Excluded intraspinal pathology requiring neurosurgical intervention, neuromuscular, syndromic, history of open CT surgery, advanced bone age at time of bracing, infantile scoliosis, braced >10yrs or <4 years old

202 juvenile idiopathic scoliosis patients braced

- 24 excluded: lack of follow up
- 76 in brace with average followup 4.8yrs
- **102 patients at skeletal maturity OR underwent spine fusion**

Sex, BMI, age, family history, MRI results, comorbidities, modified Lenke JIS Curve type, Cobb angles, Risser stage, menarche, bone age, brace type, length of brace wear, number/type of brace change, Cobb angles at brace change, compliance by report, surgical procedure.

Mean, standard deviation, percentage Cobb progression, multivariable logistical regression, odds ratio with 95% confidence intervals



**Boston Children's Hospital**  
Orthopedic Center



**NATIONWIDE CHILDREN'S**  
*When your child needs a hospital, everything matters.™*



**HARVARD MEDICAL SCHOOL**  
TEACHING HOSPITAL

# Demographics

Average age 7.9 years

9% male

28% Comorbidities: LLD, spondylolysis, cardiac, neurologic, GI

Main thoracic + lumbar modifier B most common curve pattern

Average Maximum Cobb  $29.8^{\circ}$  ( $\pm 8.7^{\circ}$ )

Followed median 5.5 years (4-7 yrs)

Table 1. Patient and bracing characteristics (N=102)		
Characteristic	Freq.	(%)
Age (years; mean $\pm$ SD)	7.9	$\pm 1.45$
Sex (% male)	9	(9%)
Height (cm; N=100)	131.7	$\pm 10.52$
Weight (kg; N=97)*	30.1	$\pm 9.95$
BMI (N=97)*	17.1	$\pm 3.80$
Comorbidity	29	(28%)
Abnormal MRI (N=99)*	21	(21%)
<b>Characteristics at presentation</b>		
Lenke classification (N=99)*		
1	55	(56%)
2	8	(8%)
3	18	(18%)
4	0	(0%)
5	4	(4%)
6	14	(14%)
Lumbar modifier		
A	26	(26%)
B	51	(50%)
C	22	(22%)
Family history of scoliosis	49	(48%)
Family history of surgery	14	(31%)
Main Thoracic Cobb angle (N=99)*	27.3	$\pm 9.47$
Lumbar Cobb angle	21.1	$\pm 8.46$
Maximum Cobb angle	28.9	$\pm 8.46$
RVAD (N=89)*	9.2	$\pm 8.75$
<b>Bracing characteristics</b>		
Age (years; mean $\pm$ SD)	8.1	$\pm 1.36$
Number of braces	2	(1 to 2)
Noncompliant	47	(46%)
Total bracing time (years; mean $\pm$ SD)	3.7	$\pm 11.63$
Cobb angle (N=94)*	13.1	$\pm 8.69$
Cobb angle correction (%; N=94)	55.6	$\pm 25.66$

\*The number in parentheses (N=) indicates the number of patients with available data for the given characteristic.



Boston Children's Hospital  
Orthopedic Center



NATIONWIDE CHILDREN'S  
When your child needs a hospital, everything matters.™



HARVARD MEDICAL SCHOOL  
TEACHING HOSPITAL

# Standard JIS Boston Protocol

Curve  $>20^{\circ}$  = MRI

•97% MRI

If MRI normal = brace

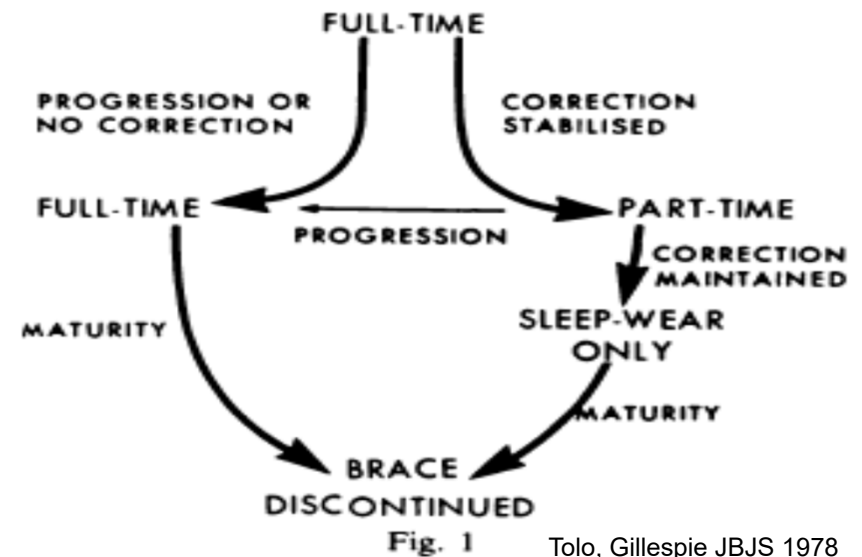
- 21% abnormalities non-operative
- 23 (18%) with OPERATIVE intraspinal pathology

Xray in brace in 2 months

- Boston Brace (92%)
- Adjust brace if poor construction/correction
- Average in brace correction: 55.6%

Q4 month clinical follow up

Brace change at discretion of surgeon



Tolo, Gillespie JBJS 1978

.....83% full time (>18 hours).....



Boston Children's Hospital  
Orthopedic Center



NATIONWIDE CHILDREN'S  
When your child needs a hospital, everything matters.™



HARVARD MEDICAL SCHOOL  
TEACHING HOSPITAL

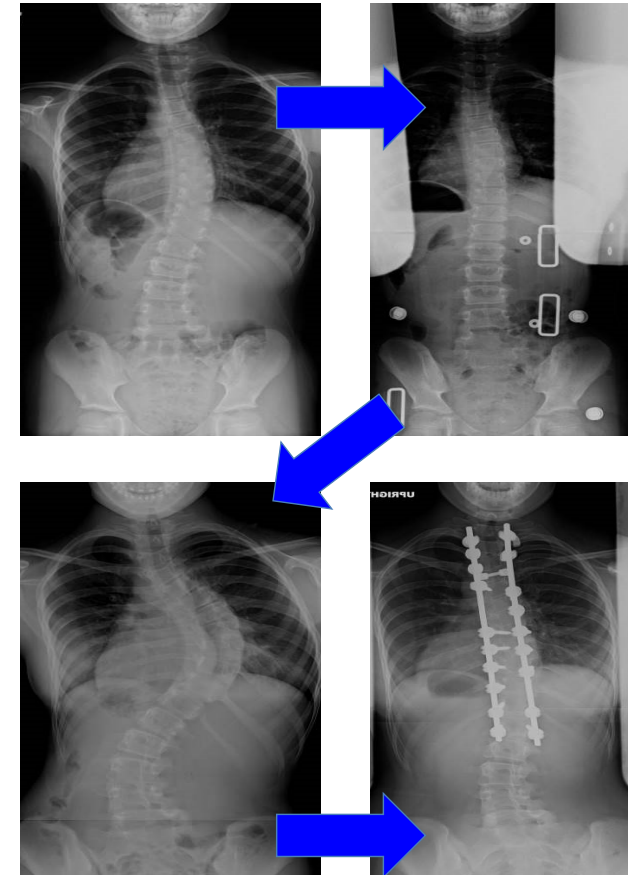
# Results

Surgical Correction: 46%

Average age:  $12.8 \pm 1.9$  yrs

## Risk factors ( $p < 0.05$ ):

- Comorbidity (OR 8.9, 95% CI 2.1-38.1)
- Larger maximum Cobb at presentation (OR 1.1, 95% CI 1.02-1.19)
  - Every  $1^\circ$  at presentation increases risk of surgery 10%
- Noncompliance (OR=11.3 96% CI 3.2-39.7)
  - 76% operative, 25% nonoperative



Boston Children's Hospital  
Orthopedic Center



NATIONWIDE CHILDREN'S  
*When your child needs a hospital, everything matters.™*

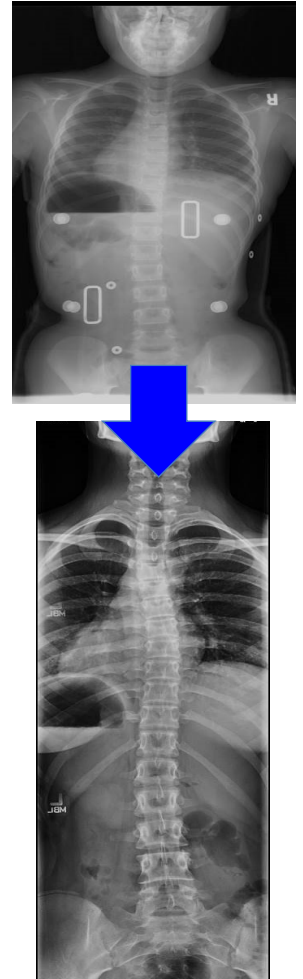


HARVARD MEDICAL SCHOOL  
TEACHING HOSPITAL

# Results

## Protective factors against surgery ( $p < 0.05$ ):

- Lumbar modifier B (OR=0.17 95% CI 0.04-0.72)
- Older age at bracing (OR 0.6, 95% CI 0.37-0.97)
  - Each additional year decreased odds of surgical correction by 40%
- More brace changes
  - For each brace change, surgical intervention decreased 74% (OR=0.26, 95% CI)
- In brace correction



Boston Children's Hospital  
Orthopedic Center



NATIONWIDE CHILDREN'S  
*When your child needs a hospital, everything matters.™*



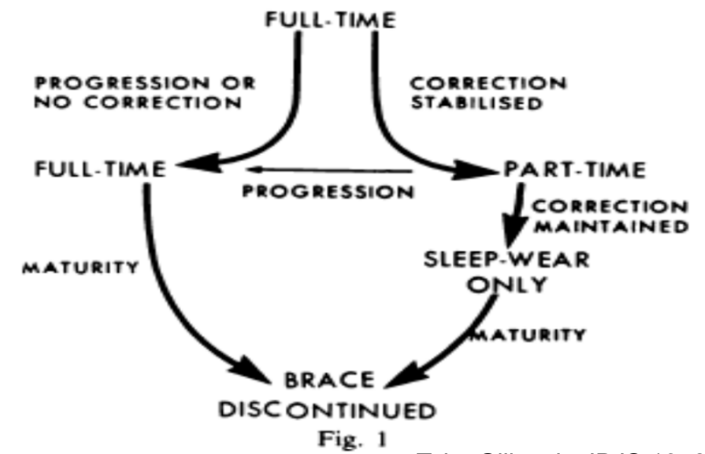
HARVARD MEDICAL SCHOOL  
TEACHING HOSPITAL



# Results

## Brace change decision making:

- 61 patients
- 81 duration of brace wear ( $p < 0.001$ )
  - Full time → part time: Cobb decrease  $9.9^\circ \pm 15^\circ$
  - Part time → full time: Cobb increased  $9.9^\circ \pm 15.6$
- 17 type of brace
  - No change in curve ( $-1.2^\circ$ )



Tolo, Gillespie JBJS 1978



Boston Children's Hospital  
Orthopedic Center



NATIONWIDE CHILDREN'S  
*When your child needs a hospital, everything matters.™*



HARVARD MEDICAL SCHOOL  
TEACHING HOSPITAL

# Results

- No Progression ( $<5^{\circ}$  )
    - 31 (34%)
  - Progressed  $>5^{\circ}$  , no surgery
    - 19 (21%), average progression  $20^{\circ}$
  - Progressed to  $>45^{\circ}$  , fused with Risser  $\leq 1$ 
    - 29 (32%), average progression  $33^{\circ}$
    - No Growing rods
  - Progressed  $>45^{\circ}$  , surgery delayed Risser  $\geq 3$ 
    - 13 (14%), average progression  $32^{\circ}$
- 



Boston Children's Hospital  
Orthopedic Center



NATIONWIDE CHILDREN'S  
*When your child needs a hospital, everything matters.™*



HARVARD MEDICAL SCHOOL  
TEACHING HOSPITAL

# Results

## Those still in brace (N=76)

- Average age at presentation 7.5 years
- Average length of current brace wear 4.8 years
- Different group – longer bracing, younger age



Boston Children's Hospital  
Orthopedic Center



NATIONWIDE CHILDREN'S  
*When your child needs a hospital, everything matters.™*



HARVARD MEDICAL SCHOOL  
TEACHING HOSPITAL

# Conclusions

Largest series of JIS  $>20^\circ$  with standard Boston bracing protocol followed to skeletal maturity

Intraspinal pathology requiring surgical intervention high (18%)

The rate of JIS progressing to need spinal fusion may be lower than previously reported with good brace fit and compliance

Risk factors for progression include other medical issues, larger Cobb angle at presentation, and noncompliance.



Boston Children's Hospital  
Orthopedic Center



NATIONWIDE CHILDREN'S  
*When your child needs a hospital, everything matters.™*



HARVARD MEDICAL SCHOOL  
TEACHING HOSPITAL

# Conclusions

Protective factors include lumbar modifier B, older age at presentation, and number of brace changes

Brace fatigue in this population may be real and contribute to noncompliance and poor brace efficacy.<sup>6</sup>

Our data is skewed toward surgical intervention due to surgery as an endpoint with 76/178 still in a brace.



**Boston Children's Hospital**  
Orthopedic Center



**NATIONWIDE CHILDREN'S**  
*When your child needs a hospital, everything matters.™*



**HARVARD MEDICAL SCHOOL**  
TEACHING HOSPITAL

# Future Directions

Prospective trial with more accurate compliance data and randomization with full time to part time for stable curves in younger juveniles



**Boston Children's Hospital**  
Orthopedic Center



**NATIONWIDE CHILDREN'S**  
*When your child needs a hospital, everything matters.™*



**HARVARD MEDICAL SCHOOL**  
TEACHING HOSPITAL

# References

1. Robinson CM, McMaster MJ. "Juvenile Idiopathic Scoliosis Curve Patterns and Prognosis in One Hundred and Nine Patients." *JBJS* Vol 78-A, 8, August 1996.
2. Tolo VT, Gillespie R. "The Characteristics of Juvenile Idiopathic Scoliosis and Results of its Treatment." *JBJS* Vol 60-B, 2 May 1978.
3. Figueiredo, UM, James JIP. "Juvenile Idiopathic Scoliosis." *JBJS* 1981 63-B, 1:61-66.
4. Khoshbin A, Caspi L, Law P, Donaldson S, Stephe D, da Silva T, Bradley CS, Wright JG. "Outcomes of Bracing in Juvenile Idiopathic Scoliosis Until Skeletal Maturity or Surgery." *Spine* 40:1, 50-53. 2014.
5. Charles YP, Daures JP, de Rosa V, Dimeglio A. "Progression Risk of Idiopathic Juvenile Scoliosis During Pubertal Growth." *Spine* 31. 17. 1933-42. 2006.
6. Jarvis J, Garbedian S, Swamy G. "Juvenile Idiopathic Scoliosis The effect of Part-time Bracing." *Spine* 33, 10, 1074-1078. 2008.
7. Noonan KJ, Weinstein SL, Jacobson WC, Dolan LA. "Use of Milwaukee Brace for Progressive Idiopathic Scoliosis." *JBJS* 78-A, 4:557-67. 1996.
8. Koc T, Lam KS, Webb JK. "Are Intraspinous anomalies in early onset scoliosis as common as once thought? A two centre United Kingdom study." *Eur Spine J.* 22: 1250-1254 2013.
9. Maenza RA. "Juvenile and adolescent idiopathic scoliosis: magnetic resonance imaging evaluation and clinical indications." *JPOB* 12: 295-302. 2003.
10. Evans SC, Edgar MA, Hall-Craggs MA, Powell, MP, Taylor MP, Noordeen HN. "MRI of 'Idiopathic' Juvenile Scoliosis." *JBJS Br* 78-B;314-7.1996.
11. Gupta P, Lenke LG, Bridwell KH. "Incidence of Neural Axis Abnormalities in Infantile and Juvenile Patients with Spinal Deformity: Is Magnetic Resonance imaging Screening Necessary?" *Spine* 23.2:206-10 1998.



**Boston Children's Hospital**  
Orthopedic Center



**NATIONWIDE CHILDREN'S**  
*When your child needs a hospital, everything matters.™*



**HARVARD MEDICAL SCHOOL**  
TEACHING HOSPITAL